

Installation Instructions

Wall Mount, Corner Bracket

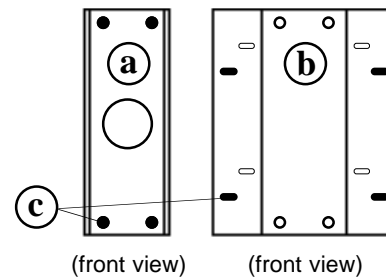
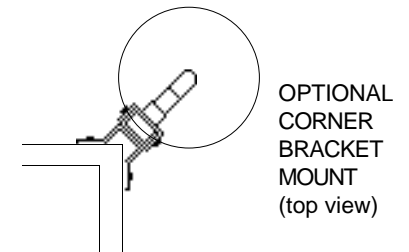
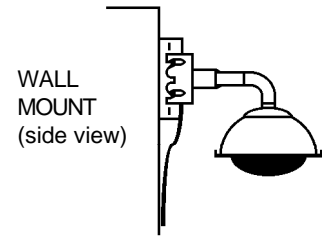
Required Parts

Wall Mount Install Kit		0351-0283-01
Description	Qty.	Part No.
Washer, flat ST, Z, .344IDX.875OD	8	2848-6301-02
Nut, hex Nylon-LK CAD 5/16-18	8	2838-9116-01
Anchor, wedge, bolt, 1/4 X 2.2	4	2880-0011
Pipe sealant	1	1600-0095-01
Plug, 1-7/8 x 1"	1	0649-0685-01
RTV compound	1	1600-0001
Adaptor, BNC, male to female	1	2113-0004
Nut, hex, 1.5" pipe with seal	1	1417-0042-01

Other Parts/Assys

Description	Qty.	Part No.
Pipe, 12 in. long	1	0500-3465-01
Base, wall/pole	1	0500-3463-01
Support, wall/pole	1	0500-3464-01
Fitting, 90° pipe	1	0500-3499-01
<i>Corner Bracket Mount only:</i>		
Corner Brkt, mounting (optional)	1	0500-3636-01

U.S. Customary Measurements in italics are rounded off.



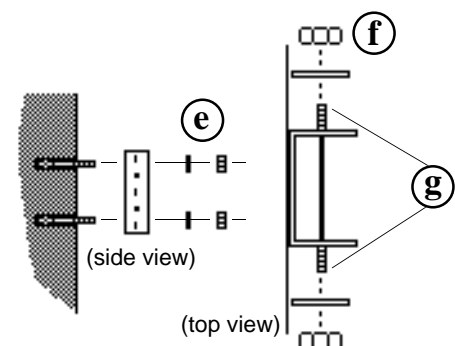
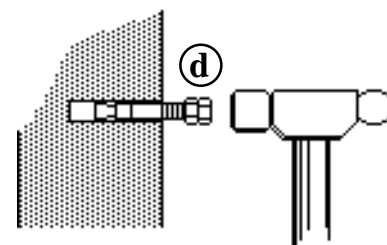
Procedure

Place wall-mount base (a) or corner bracket (b) in desired location, level, and mark mounting holes (c).

Drill four 1/4-inch holes to the required depth. For each hole:

- Screw two nuts onto anchor bolt, with two threads of second nut extending over end of bolt to protect threads (d).
- Hammer bolt into wall leaving 1-1/4 inch of bolt exposed. Then, remove nuts.

Slip base shown or corner bracket over bolts and secure using hardware (e). Secure base to studs of corner bracket, if used. Then loosely thread a washer and nut (f) onto the four threaded studs of the base (g).



(over)

Wall Mount, Corner Bracket, continued

Feed camera dome cables (h) through mounting bracket (i).

Apply sealant (j) to threads of straight pipe (k), then slip pipe over cable and screw pipe into bracket.

Slip elbow (l) over cable and screw elbow onto pipe. Once on, elbow opening should face down. **NOTE:** Approximately 36cm (14") of cable must exit elbow. If so, insert plug (m) and seal with RTV.

Hook bracket (n) on threaded stud between washer and base (o) while feeding excess cable (p) back through hole in bracket. Level, and tighten nuts (q) on both sides of base to secure.

The mount is now ready for housing and chassis installation.

